

Free Evo



LEVEL



CHARGER



STOP



Equipped with:

- Very compact scrubbing machines suitable to work for the maintenance cleaning of limited-size areas (up to 1.500 m<sup>2</sup>)
- Especially suitable for cleaning: car shops, sales points, gym, health care
- Control panel with operator presence safety system
- Low level battery indicator: brush/vacuum and traction progressive cut off (Battery models)
- Solution water filter and solenoid valve
- Easy access to the battery compartment
- Quick drain and easily inspectable recovery tank
- Non-marking wheels
- Roto-molded polyethylene tanks, shock and acid resistant
- The lower tank also serves as battery compartment
- Low noise operation thanks to the protected positioning of vacuum motor.

\* **New, standard on machines starting from 2022, compatible with all previous machine models**

STANDARD EQUIPMENT



• 5.511.2238  
PP brush Ø 483 mm - 19"



• 4.508.X468  
Front squeegee blade L.830 mm Shore 40 Th. 2.5 mm  
• 4.508.X467  
Rear squeegee blade L.870 mm Shore 40 Th. 3 mm



• 0.108.0042  
On-board Battery charger  
24V 10A  
only for model code:  
8.527.0001 - 8.527.0002  
8.527.0010 - 8.527.0012



• 2 x 0.107.0054  
Maintenance free battery  
12V 75Ah BT DC 5.5  
only for model code:  
8.527.0010 - 8.527.0012

Other available versions:

- 8.527.0010 - Free Evo 50B with batteries and battery charger
- 8.527.0012 - Free Evo 50BT with batteries and battery charger

|                           | Free Evo 50E                 | Free Evo 50B                 | Free Evo 50B                   | Free Evo 50BT                | Free Evo 50BT                  |
|---------------------------|------------------------------|------------------------------|--------------------------------|------------------------------|--------------------------------|
| code                      | 8.527.0003                   | 8.527.0004                   | 8.527.0001                     | 8.527.0011                   | 8.527.0002                     |
| power supply              | 230 V - 50 Hz                | 24V                          | 24V (battery charger included) | 24V                          | 24V (battery charger included) |
| scrubbing/squeegee width  | 500/800 mm                   | 500/800 mm                   | 500/800 mm                     | 500/800 mm                   | 500/800 mm                     |
| max working capacity      | 2000 m <sup>2</sup> /h       | 2000 m <sup>2</sup> /h       | 2000 m <sup>2</sup> /h         | 2000 m <sup>2</sup> /h       | 2000 m <sup>2</sup> /h         |
| solution tank capacity    | 44 l/11,63 gal               | 44 l/11,63 gal               | 44 l/11,63 gal                 | 44 l/11,63 gal               | 44 l/11,63 gal                 |
| recovery tank capacity    | 50-60 l/13,21-16 gal         | 50-60 l/13,21-16 gal         | 50-60 l/13,21-16 gal           | 50-60 l/13,21-16 gal         | 50-60 l/13,21-16 gal           |
| traction/traction motor   | mechanical                   | mechanical                   | mechanical                     | automatic/150W               | automatic/150W                 |
| RPM/pressure on the brush | 145/20 kg/44 lbs             | 145/20 kg/44 lbs             | 145/20 kg/44 lbs               | 145/20 kg/44 lbs             | 145/20 kg/44 lbs               |
| brush motor power         | 550W                         | 550W                         | 550W                           | 550W                         | 550W                           |
| detergent solution system | solenoid valve               | solenoid valve               | solenoid valve                 | solenoid valve               | solenoid valve                 |
| depression/vacuum motor   | 1700 mmH <sub>2</sub> O/800W | 1280 mmH <sub>2</sub> O/400W | 1280 mmH <sub>2</sub> O/400W   | 1280 mmH <sub>2</sub> O/400W | 1280 mmH <sub>2</sub> O/400W   |
| dimensions/weight         | 116x46x98cm/95 kg            | 116x51x98cm/62 kg            | 116x51x98cm/63 kg              | 116x51x98cm/66 kg            | 116x51x98cm/67 kg              |

**OPTIONAL**



Powerful gearmotor; metal brush plate with integrated plastic splash guard/bumper.



- 2 x 0.107.0002  
Tubular battery Pb-acid  
12V 118Ah C5



- 2 x 0.107.0063  
GEL Battery 12 MFP 105  
12V 105Ah C5



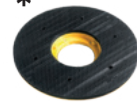
- 4.508.1178 Polyurethane front blade L.830 TH. 3
- 4.508.1177 Polyurethane rear blade L.870 TH. 4

\*



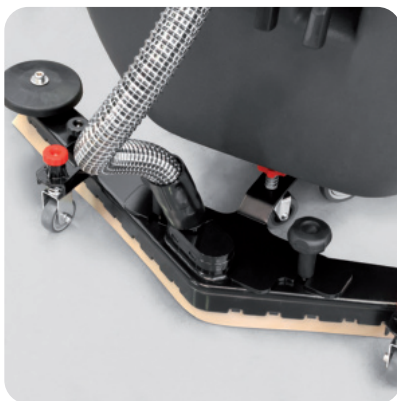
- 5.511.2239  
Tyrex brush Ø 483 mm-19"
- 5.511.2240  
PP 0,3 brush Ø 483 mm-19"
- 5.511.2241  
PES brush Ø 483 mm - 19"

\*



- 5.511.2242  
EWU pad driver Ø 483 mm-19"

The outflow of the detergent solution is controlled by a solenoid valve. The actuation of the solenoid valve is operated by the control lever, avoiding the detergent solution outflow when the brush is stopped during the interruptions of work.



Renovated squeegee with new pressure adjusting system. The squeegee blades are easily replaceable without the use of tools. Quick and easy squeegee coupling through the two large knobs; the squeegee is released without any damage in the event of accidental impact.



- 6.508.0034  
Abrasive pad Ø 483 mm-19"  
- beige (5 pcs.)
- 6.508.0041  
Abrasive pad Ø 483 mm-19"  
- green (5 pcs.)
- 6.508.0048  
Abrasive pad Ø 483 mm-19"  
- black (5 pcs.)



- 4.512.0068  
Extension electric cord 15 m  
with Schuko plug

Easy and intuitive controls. The outflow of the cleaning solution is easily controlled using the mechanical lever placed on the control panel. Inspectable mesh filter to trap any existing solid body in the cleaning solution.

