

## Wall mounted or mobile medium pressure Washing machine 12 bar max

# Hydra 12/25



*Wheeled version*



*Wall mounted version*



*Mobile version*

The Hydra compact 12/25 is a latest generation low pressure washing machine designed and produced by VEMA to satisfy the demands of an ever more selective and demanding market .

The frame, pump and all control components are entirely made from stainless steel to satisfy the user's expectations and guarantee incomparable long term reliability with minimum noise levels. .

Easy to use, compact, with a low maintenance requirement and excellent long term durability, it saves on both water and detergent by optimising all washing phases, obtaining excellent results .

The pump absorbs just 1.3 kW, produces a pressure of about 12 bars with a maximum flow rate of 35 l/min and can be used with hot water up to 90°C

The controls are low voltage (24 V) and a delayed total stop function shuts down the system when the lance is closed.

**As with all low to medium pressure systems, compressed air must be introduced for foaming .**

Water consumption during foaming is just 4 l/min with coverage of about 50/60 m<sup>2</sup> per minute and detergent consumption of less than 3%.

Finally, if compressed air is not available, a version with built-in compressor is also available.

The Hydra 12/25 is also among the most rational washing machines to operate, as to start washing the operator simply turns the lever on the front panel and inserts the lance .

11



# Hydra 12/25

11



Wheeled version



Wall mounted version



Mobile version

## AVAILABLE CONFIGURATION

CODE	MODEL	FLOW RATE (lt/min)	PRESSURE (Bar)	POWER (KW)	RPM	AIR COMPRESSOR POWER (KW)	VOLTAGE (Volt)	WEIGHT (Kg)	DIMENSIONS LxHxD (mm)	WATER IN-LET MAX TEMPERATURE	MAX NUMBERS OF OPERATORS
1060	Wall mounted	25/35	12/10	1,3	2800	-	230 MF	35	500 x 350 x 350	70 °C	1
1060/R	Mobile	25/35	12/10	1,3	2800	-	230 MF	55	500 x 1040 x 750	70 °C	1
1061	Wall mounted	25/35	12/10	1,3	2800	-	400 T	35	500 x 350 x 350	70 °C	1
1061/C	Wall mounted	25/35	12/10	1,3	2800	1,5	400 T	48	500 x 350 x 350	70 °C	1
1061/R	Mobile	25/35	12/10	1,3	2800	-	400 T	55	500 x 1040 x 750	70 °C	1
1061/CR	Mobile	25/35	12/10	1,3	2800	1,5	400 T	68	500 x 1040 x 750	70 °C	1
1059/R	Wheeled *	25/35	12/10	1,3	2800	-	400 T	70	550 x 1000 x 1000	70 °C	1
1059/CR	Wheeled *	25/35	12/10	1,3	2800	0,4	400 T	74	550 x 1000 x 1000	70 °C	1

\* Manuale Hose Reel included - With Dual Holder Tank: Dimensions (LxHxD) : 550 x 1000 x 1014

## TECHNICAL DETAILS

- Low voltage controls (24 volt).
- Total stop.
- Over temperature 95 °C. safety control
- Pressure indicator.
- Controls by electronic flow sensor.
- S/s multistage centrifugal pump.
- IP65 control panel
- S/s dosing system Aisi/316 complete of by-pass for foam and disinfection
- Compressed air adjustment complete of backflow security .
- Thermoswitch on air compressor (only for versions with air compressor on board)
- S/s frame
- Water lack controls
- Control of the correct sense of motor rotation .

## Standard accessories

# Hydra 12/25



*S/s nozzle 1/4"*  
**Code 194xx**

*S/s washing lance without nozzle complete of male s/s coupling*  
*(cm 70 only for wall mounted versions) Code 11114/STS14*  
*(cm 90 only for wheeled versions) Code 11211/STS14*



*S/s foam lance cm 30 complete of nozzle*  
*and s/s male quick coupling*  
**Code 11209/S**



*S/s pin complete of nozzle*  
*straight jet and protection*  
**Code 90240/S**



*Bluflood hose. hose L= 20mt.*  
*S/s Crimped 1/2" female*  
**Code 18262/FFX/20000**



*H.p. gun with swivel*  
**Code 25103**



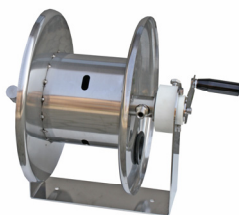
*S/s wall holder for hose*  
**Code 20903**



*S/s mounting bracket*  
**Code 33011+ Code 33012**

11

## Optional accessories



*S/s manual hose reel*  
**Code 10400/X**  
*(Section 51)*



*S/s automatic hose reel (without hose)*  
**Code 10500**  
*(Section 50)*

**vema**®